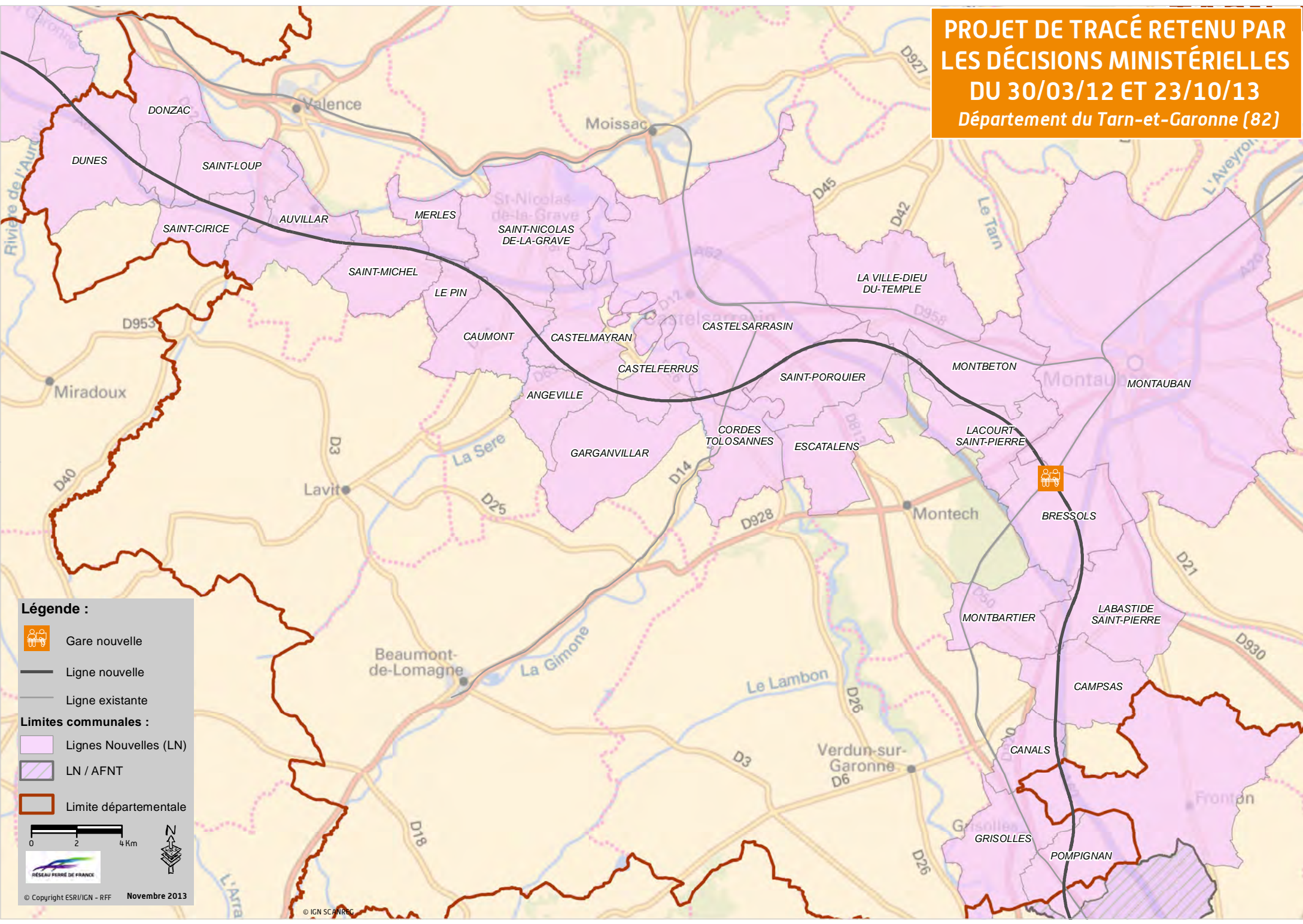


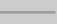





**PROJET DE TRACÉ RETENU PAR
LES DÉCISIONS MINISTÉRIELLES
DU 30/03/12 ET 23/10/13
Département du Tarn-et-Garonne (82)**



Légende :

-  Gare nouvelle
-  Ligne nouvelle
-  Ligne existante
- Limites communales :**
-  Lignes Nouvelles (LN)
-  LN / AFNT
-  Limite départementale

0 2 4 Km

RESEAU FERRE DE FRANCE

© Copyright ESRI/IGN - RFF Novembre 2013